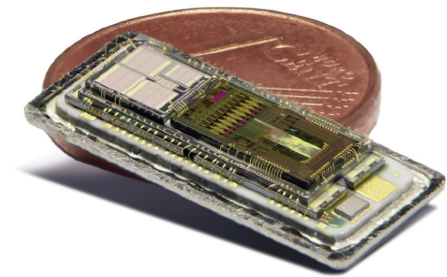


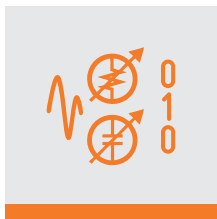
# Medical ASIC development



## What makes us stand out

- ISO13485 certified for medical implants and wearables
- Excellent track record in innovative and high-complex medical applications
- Largest fab-independent European design group
- Ultra-low power in combination with high-voltage for long battery life
- MRI / EMC / ESD compatibility
- In-house production test (ATE) development
- Minimization of external components for minimal device size
- Support for FDA Class I, II and III
- Every ASIC is made for and sold to one single customer only
- First-time-right design methodology

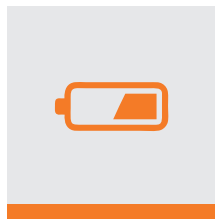
## Main expertise areas



Sensor / MEMS



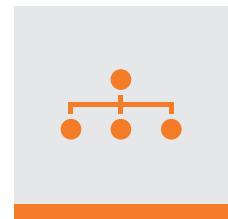
High-Voltage



Power / Battery



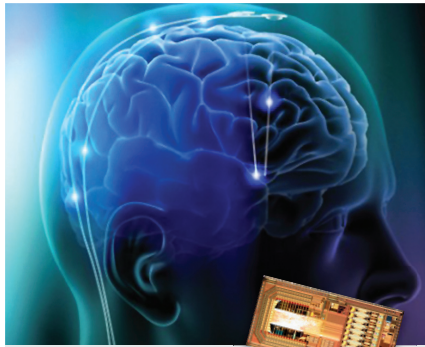
Low-Power



Communication

[www.icsense.com](http://www.icsense.com)





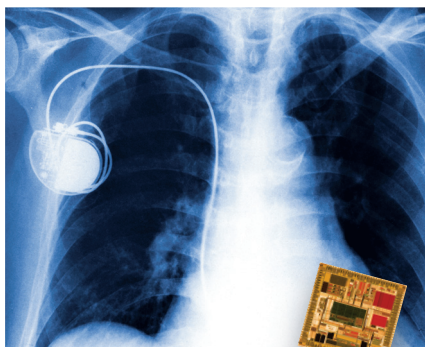
40-channel Deep Brain Stimulation (DBS) and recording ASIC



Ultra-low-power sensor readout with NFC interface



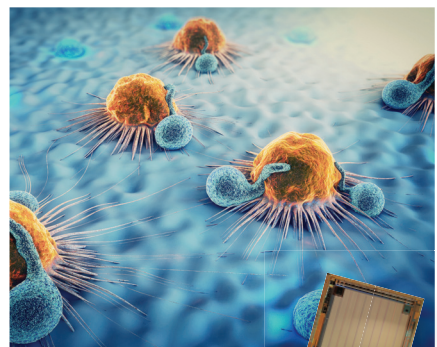
Neuromodulation ASIC for Obstructive Sleep Apnea



Medical implantable power management & battery charging ASIC



Electrode array drivers for nerve stimulation in cochlear implants



Impedance spectroscopy ASIC for cancer cell detection and characterization



High-efficiency power management ASIC for hearing aids



Low-noise portable X-ray imaging chipset



Multi-channel MUX chip-in-tip for Deep Brain Stimulation

Further details on medical ASIC developments

[www.icsense.com/medical](http://www.icsense.com/medical)



ICSSENSE NV  
Gaston Geenslaan 14  
B-3001 Leuven (Belgium)

Tel. +32-16-58 97 00  
[supply@icsense.com](mailto:supply@icsense.com)  
[www.icsense.com](http://www.icsense.com)

[linkedin.com/company/icsense](https://www.linkedin.com/company/icsense)